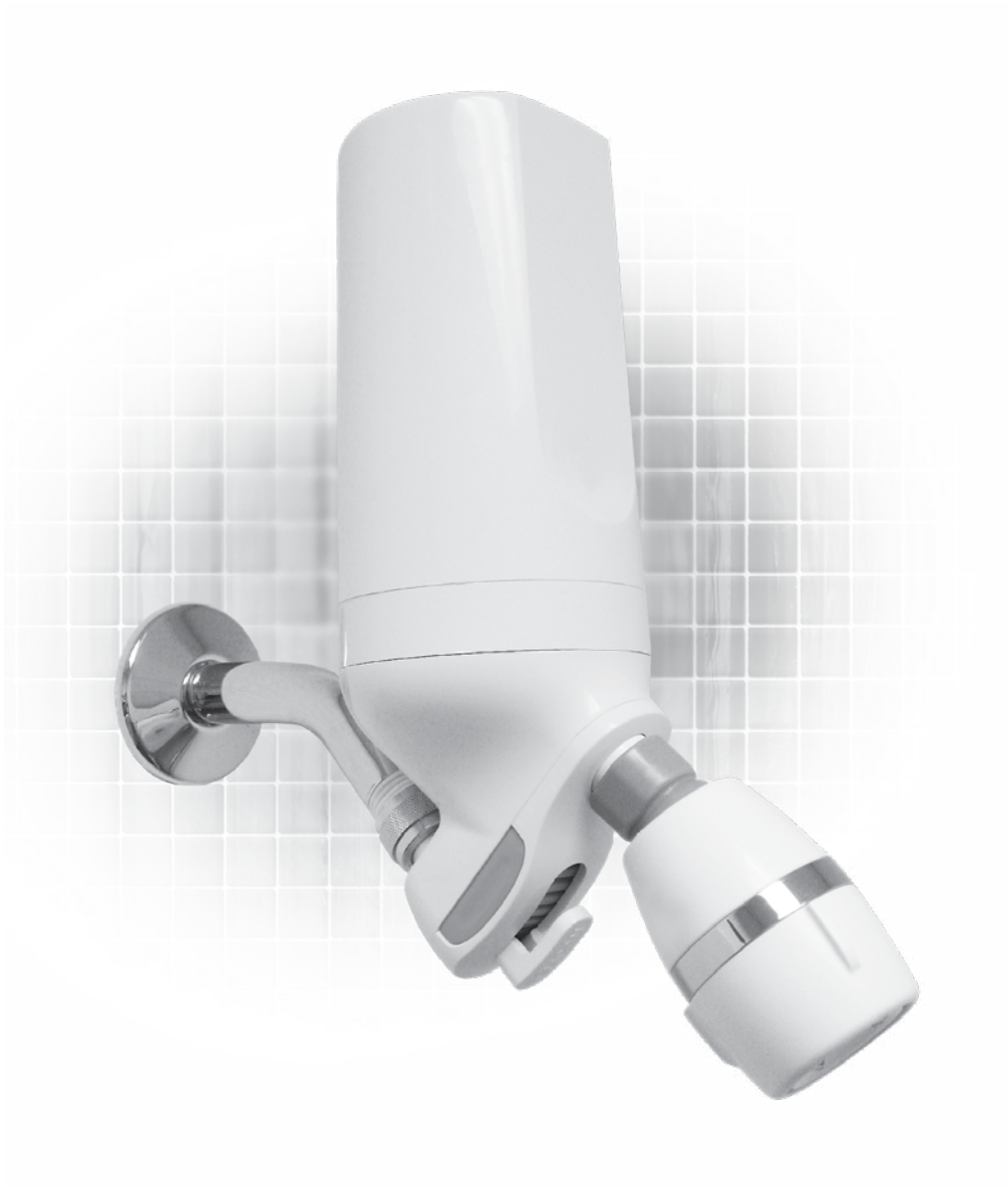




PREMIUM WHITE SHOWER FILTER

PSF-1-P

Installation Instructions



 **Notice**

For best results, use the shower head provided with this system.

COMPLETE PARTS LIST

Note: The parts supplied are intended to accommodate a variety of water supply lines. Additional fittings may be needed to fit to your plumbing. Visit pentair.com to view our full line of installation kits.

Description	Qty.	Description	Qty.
Shower Filter Body, Jacket and Cartridge (already assembled)	1	Fragrance Block (Optional)	1
Shower Head	1	Plumber's Tape	1

REMOVE SHOWER HEAD

Remove your existing shower head from the supply pipe.

INSERT FRAGRANCE BAR

Figure A shows the location to insert the optional fragrance bar.

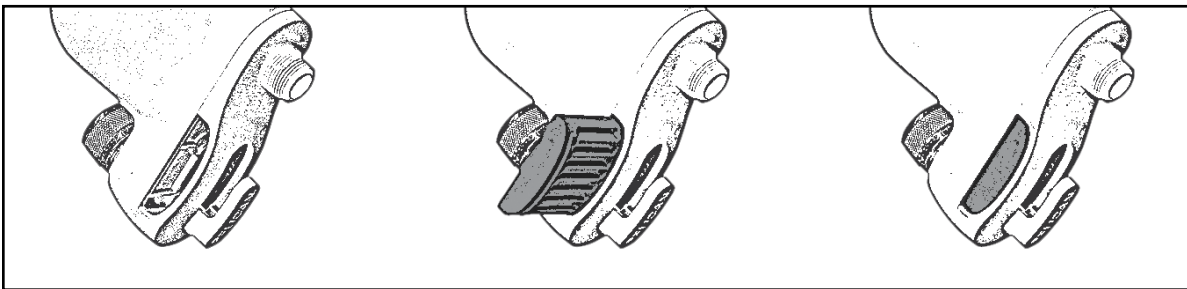


Figure A

! Caution

Ensure the rubber washer is in place in the chrome inlet collar.

FILTER ATTACHMENT

1. Wrap plumbers tape five (5) or six (6) times around the shower pipe.
2. Attach the shower filter body to the side of the shower pipe with the chrome collar. (Figure B)
3. Turn clockwise to tighten.
4. Use a pair of pliers to turn the chrome collar until the filter system is firmly tightened.

! Caution

Do not over tighten the chrome inlet collar. Overtightening may cause the washer to compress into the inside of the shower pipe, resulting in leakage around the connector. If this occurs, unscrew the chrome inlet collar from the pipe, reinstall the washer and reconnect the shower pipe.

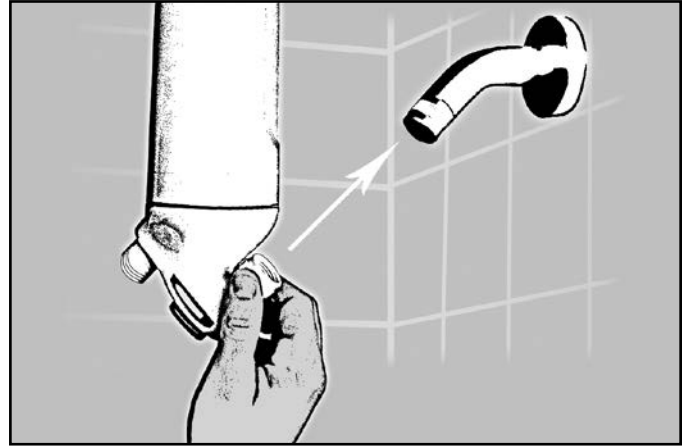


Figure B

FLUSH FILTER

Flush and Activate Filter Until Water Runs Clear.

1. Use cold water for the initial flushing. After the water has turned clear, adjust the temperature up to a normal shower temperature. (Please see "Note" below)
2. Notice that there is a slight delay in temperature adjustment due to the volume of water in the filter; take this delay into account when making temperature adjustments. Make slight adjustments and wait 30 seconds for temperature change. Run water until clear and then turn off and back on several times. Repeat this procedure until the initial surge of water is free of discoloration.

Notice

The initial few gallons of water will contain carbon fines and may soil your shower stall. It's a good idea to place a container underneath the shower filter to catch the first few gallons of water. This carbonized water is great for plants; it can be safely discarded in a plant bed or down the drain.

SHOWER HEAD ATTACHMENT

Attach the shower head to the filter (Figure C).

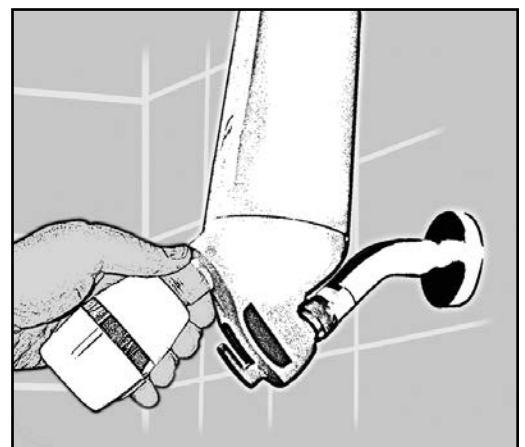


Figure C

! Caution

DO NOT use a shower head or wand with a shut off valve.

PRODUCT OPERATION AND SPECIFICATIONS

Specification Description	PSF-1-P
Maximum Flow Rate	1.5 GPM (High-Flow Setting)
Operating Pressure	80 PSI
Operating Temperatures	115°F
Rated Capacity	15,000 Gallons
Replacement Filter	PSF-1R

MAINTENANCE

When should I replace the filter cartridges?

The Pentair PSF-1-P Shower Filter should be replaced every 6 months to ensure peak performance. If you use the filter more than twice each day, take showers longer than 10 minutes or your city uses surface (lake or river) water, it is recommended that the filter be changed more frequently. Surface water typically has higher levels of sediment and chlorine and will exhaust the filter media more rapidly. For replacement filters for your PDF Series premium Countertop Filter, please visit Pentair.com.

Replacement Model #: PSF-1R

IMPORTANT INFORMATION

In compliance with California State Law, this system has a maximum flow rate of 1.5 gallons per minute. The supplied shower head comes standard with two settings. Choose the high-flow 1.5 gallon per minute output or easily switch to the 1.0 gallon per minute water-conserving option.

PRODUCT WARRANTY

For details on your Pentair product warranty, please visit pentair.com/assets/residential-filtration-warranty.

CAUTION

Do not use with water that is microbiological/y unsafe or of unknown water quality without adequate disinfection before or after the system. Systems certified for cyst reduction may be used on disinfected waters that may contain filterable cysts.

This filter system is designed and tested for use with genuine Pentair parts including replacement filters and all hardware (diverter valve). Use of parts from other manufacturers may result in loss of contaminant reduction performance, system damage or failure. Use of parts from other manufacturers will also void your warranty.

System and installation to comply with state and local laws and regulations. If you have questions, please call customer service.



2361 Mason Ave | Suite 100 | Daytona Beach, FL 32117 | United States
P: 877.842.1635 | Technical Services: 877.842.1635 | pentair.com/homewater

© 2021 Pentair. All indicated Pentair trademarks and logos are property of Pentair.
Third party registered and unregistered trademarks and logos are the property of their respective owners.

This system has been tested according to NSF/ANSI 177 for reduction of free chlorine by KDF Fluid Treatment Laboratory. The concentration of free available chlorine in water entering the system was reduced to a concentration less than or equal to the permissible limit for water leaving the system, as specified by NSF/ANSI 177.